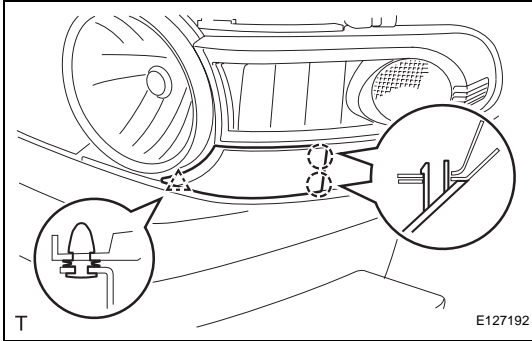


REMOVAL

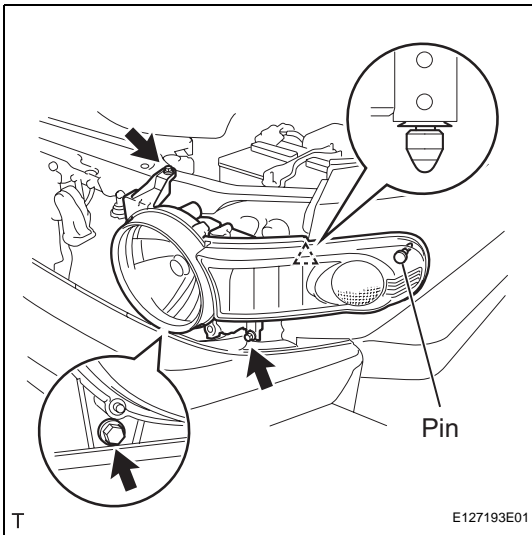
HINT:

- Use the same procedure for both the RH and LH sides.
- The procedure described below is for the LH side.

- 1. DISCONNECT CABLE FROM NEGATIVE BATTERY TERMINAL**
- 2. REMOVE RADIATOR GRILLE (See page ET-4)**
- 3. REMOVE FRONT BUMPER FILLER**
 - (a) Disengage the 2 claws and clip and remove the front bumper filler.

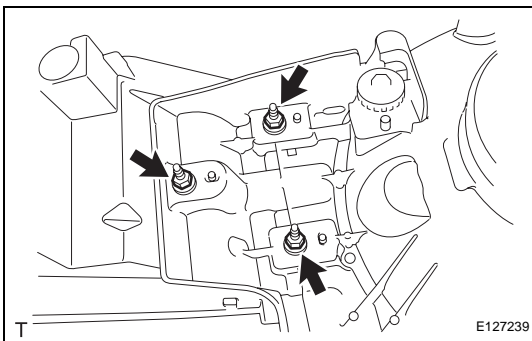


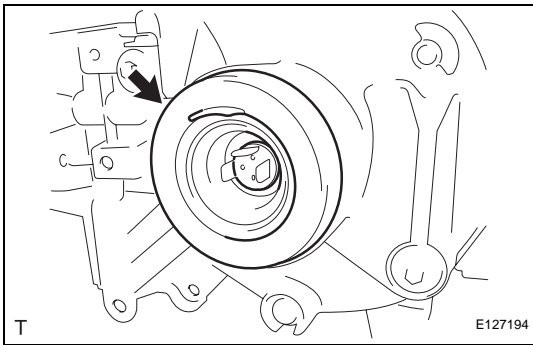
- 4. REMOVE HEADLIGHT ASSEMBLY**
 - (a) Disconnect the 2 connectors.
 - (b) Remove the 3 screws.
 - (c) Disengage the clip and pin and slide the headlight toward the front of the vehicle.



DISASSEMBLY

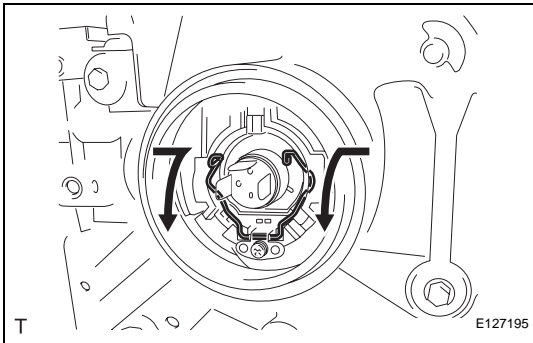
- 1. REMOVE HEADLIGHT ASSEMBLY**
 - (a) Remove the 3 nuts and the headlight.



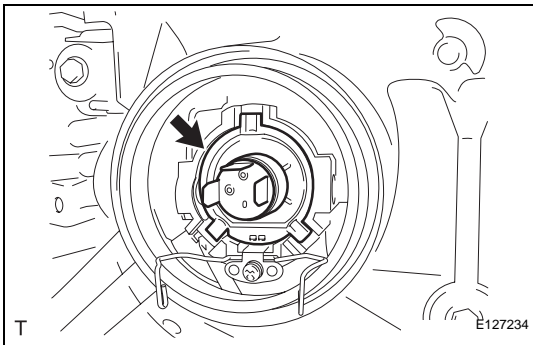


2. REMOVE HEADLIGHT, NO. 1 BULB

(a) Remove the socket cover.



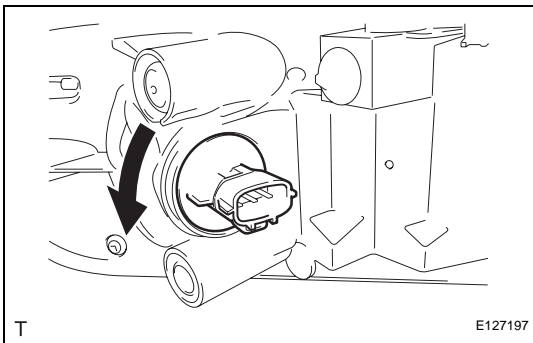
(b) Push the set spring, and pull it in the direction indicated by the arrows in the illustration, to disengage it.



(c) Remove the headlight, No. 1 bulb.

NOTICE:

Do not touch the bulb glass with your fingers.



3. REMOVE FRONT TURN SIGNAL LIGHT BULB

(a) Turn the front turn signal light socket and bulb, in the direction indicated by the arrow in the illustration, to remove them.

(b) Remove the front turn signal light bulb from the light socket.